

2

1

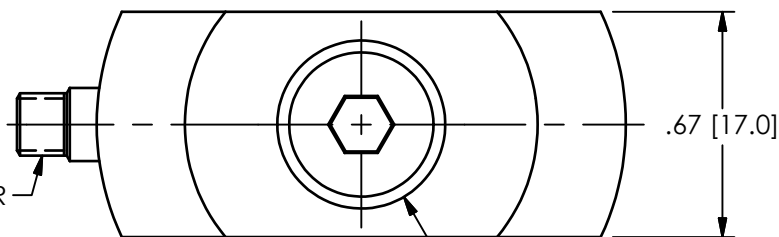
PCB Piezotronics Inc. claims proprietary rights in the information disclosed hereon. Neither it nor any reproduction thereof will be disclosed to others without the written consent of PCB Piezotronics Inc.

REVISIONS

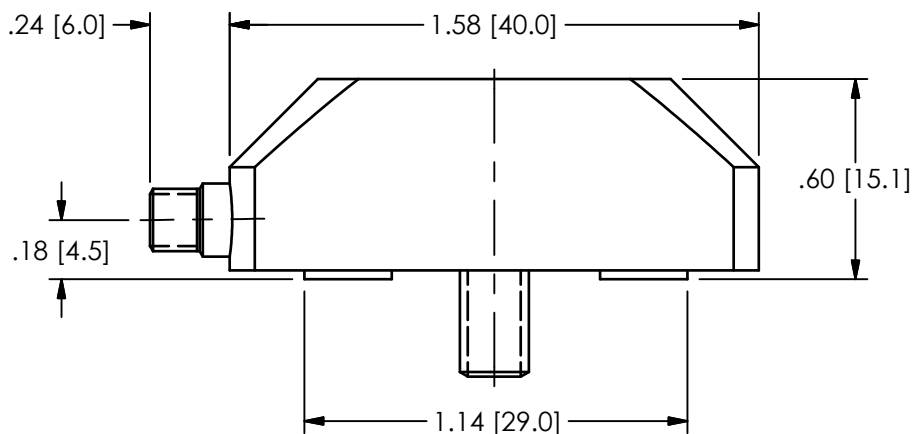
REV	DESCRIPTION	DIN
D	CHANGED TORQUE INSTRUCTION FROM 86 TO 89 IN-LBS	47189

22493

ELECTRICAL CONNECTOR
10-32 UNF-2A

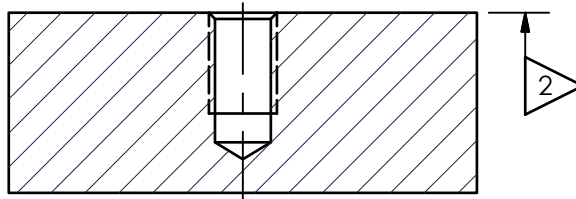


MODEL M081A100:
M6 X 1.00-6g X .87 [22.0] LONG
FLAT HEAD HEX SCREW



MOUNTING HOLE PREPERATION:

Ø.199 [5.05] ∇ .45 [11.4] 1
M6 X 1.00-6H ∇ .35 [8.9]



3 TORQUE SCREW TO 86 IN-LBS [10 Nm] MINIMUM

2 MOUNTING SURFACE MUST BE FLAT TO WITHIN .001 [.03] WITH
AT LEAST A 125 [3.2] FINISH

1 DRILL PERPENDICULAR TO MOUNTING SURFACE TO WITHIN 1°

UNLESS OTHERWISE SPECIFIED TOLERANCES ARE:

DIMENSIONS IN INCHES		DIMENSIONS IN MILLIMETERS [IN BRACKETS]		MCK		9/27/17		MCK		9/27/17		MJK		9/27/17		<div> 3425 WALDEN AVE. DEPEW, NY 14043 (716) 684-0001 E-MAIL: sales@pcb.com</div>
DECIMALS XX ±.01 XXX ±.005		DECIMALS X ± 0.3 XX ± 0.13		TITLE INSTALLATION DRAWING MODEL 240XXX SERIES STRAIN SENSOR												
ANGLES ± 2 DEGREES		ANGLES ± 2 DEGREES														
FILLETS AND RADII .003 - .005		FILLETS AND RADII 0.07 - 0.13														
				CODE IDENT. NO. 52681				DWG. NO. 22493								
				SCALE: 1.5X				SHEET 1 OF 1								

2

1